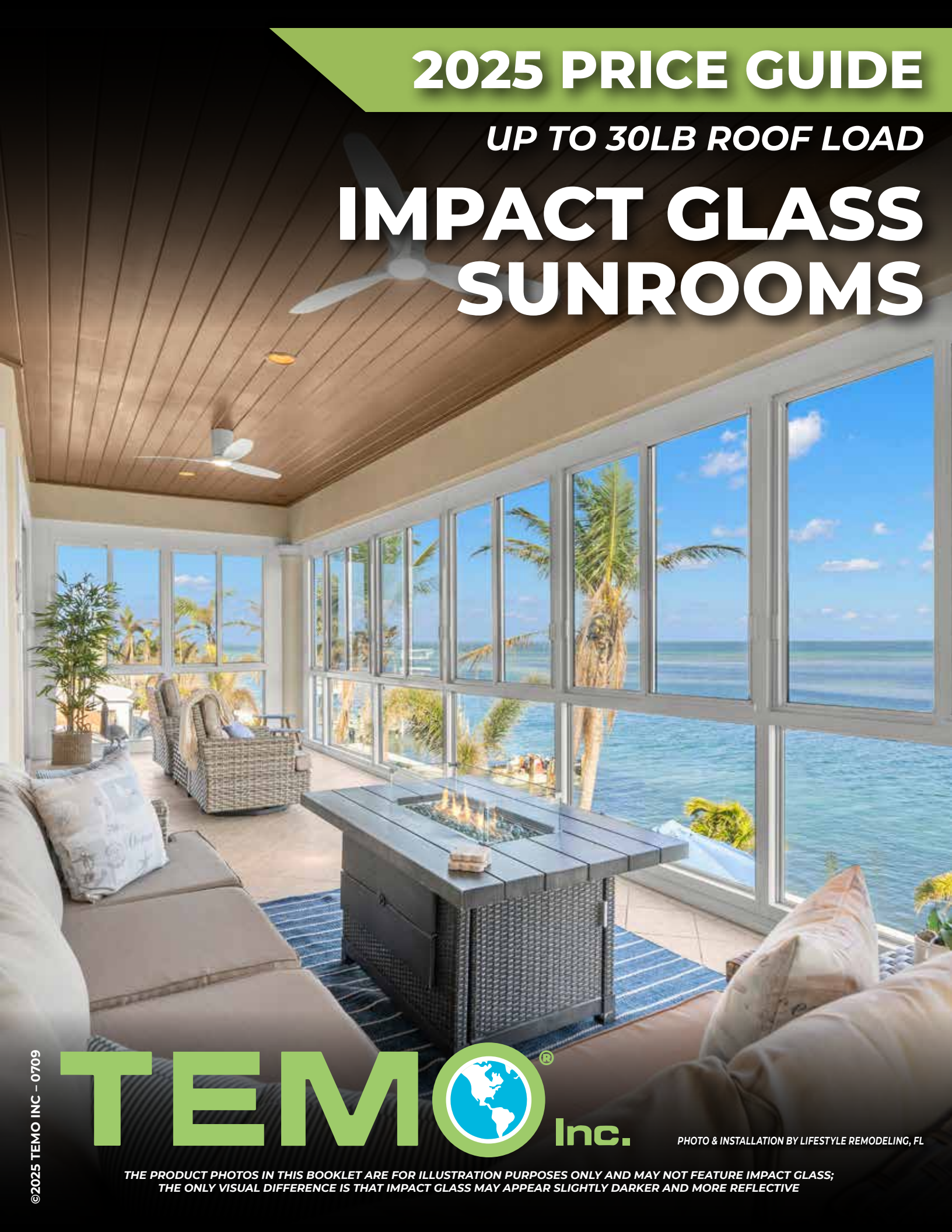


2025 PRICE GUIDE

UP TO 30LB ROOF LOAD

IMPACT GLASS SUNROOMS



©2025 TEMO INC - 0709

TEMO  **Inc.**

PHOTO & INSTALLATION BY LIFESTYLE REMODELING, FL

THE PRODUCT PHOTOS IN THIS BOOKLET ARE FOR ILLUSTRATION PURPOSES ONLY AND MAY NOT FEATURE IMPACT GLASS;
THE ONLY VISUAL DIFFERENCE IS THAT IMPACT GLASS MAY APPEAR SLIGHTLY DARKER AND MORE REFLECTIVE

Table of Contents, Instructions & Helpful Tips

The Temo Inc Price Guide is a complete guideline to enable you to quote nearly any project that you are seeking to complete. If your job site is larger, taller or a unique design, you may want to review this with a Temo Representative or Engineering. If the project goes beyond the book in any way, we would recommend that you seek to obtain an Architectural Drawing Fee from the homeowner to allow you to present an accurate quote for a presentation. There may be a small fee for extensive drawing projects.

TABLE OF CONTENTS

INSTRUCTIONS & HELPFUL TIPS2

IMPACT GLASS SUNROOM

WHY CHOOSE TEMO?

7 Certifications Information3

EXCLUSIVE FEATURES 4

UPPER DECK –

Impact Glass Sunroom7 – 9

Walls Only 10 – 11

VISTA VIEW –

Impact Glass Sunroom13 – 17

Walls Only18 – 19

■ IMPACT GLASS SUNROOM COLORS AVAILABLE: White or Bronze.



- **TO ACTIVATE THE WARRANTY –**
The homeowner must complete the tear-off portion on the warranty certificate and mail to Temo Inc. You can also register online at: www.TemoInc.com/warranty



■ THERMAL ROOF LOAD SPAN CHART

All spans are the outside wall.

| 4.25" THERMAL ROOF PANEL | DESCRIPTION | LOAD / SPAN | PRICE |
|--------------------------|----------------------|--|----------------|
| | .024 1# - Roof Panel | 10 lb - 18'-0" 20 lb - 13'-0" 30 lb - 10'-6" 40 lb - 9'-0" | \$21 PER SQ FT |
| | .032 1# - Roof Panel | 10 lb - 19'-0" 20 lb - 15'-0" 30 lb - 12'-0" 40 lb - 10'-6" | \$24 PER SQ FT |
| | .032 2# - Roof Panel | 10 lb - 20'-0" 20 lb - 18'-3" 30 lb - 15'-6" 40 lb - 13'-1" 50 lb - 12'-0" 60 lb - 11'-0" 70 lb - 10'-0" 80 lb - 9'-6" 90 lb - 8'-0" 100 lb - 7'-6" | \$36 PER SQ FT |

NOTE: All roof panels are 4' Wide.
This price guide is based on a 30-pound load.
To estimate the cost for a 10 & 20 pound load:

1. Calculate the square footage of the roof.
2. Refer to the "Thermal Load Span Chart" to find the price difference per square foot between the 30-pound and 10-pound loads.
3. Multiply the price difference by the total square footage and subtract this amount from the published price.

EXAMPLE:

For a 13' roof panel (12' projection) x 20' width = 260 sq ft:

- Price difference: \$3 per sq ft
- Total deduction: \$3 x 260 sq ft = \$780

You can estimate a \$780 deduction from the published price.

**THIS BOOK IS INTENDED TO BE A PRICE GUIDE.
ACTUAL PRICES MAY VARY AND WILL DEPEND ON PRODUCT AND CONFIGURATION.**

TEM[®]

IMPACT GLASS SUNROOM

TORNADO



Built for the Toughest Storms — Designed for Peace of Mind

When it comes to protecting your home and family,
TEMO delivers more than just sunroom windows and doors.
Our Hurricane HVHZ Impact System is engineered to meet the strictest
Florida Building Code Standards (TAS), ensuring performance in the face of extreme weather.

Why Choose TEMO?

Independently tested and certified by **INTERTEK**, a world-renowned lab with over 130 years of experience, our impact-rated windows and doors offer industry-leading protection through **seven powerful certification tests**:

1 Hurricane-Force Wind Resistance

Engineered to withstand wind speeds up to **180 mph**, equivalent to Category 4+ hurricanes or EF3/EF4 tornadoes. (TAS 202) **PASS**

2 Missile-Grade Impact Protection

Resists high-speed debris impact from a 9-lb. 2x4 launched at **50 ft/sec** — with no interior breach after **six direct hits**. (TAS 201/203) **PASS**

3 Break-In Resistance

Endures **150lbs of force** from multiple directions and resists entry for up to **15 minutes** against hand tools and brute force. (TAS 202 / ASTM F588) **PASS**

4 Water Intrusion Prevention

Simulated **75 mph wind-driven rain** (5 GPH/SF for 15+ minutes) results in **zero leakage** inside your sunroom. (TAS 202) **PASS**

5 Air & Dust Barrier

Proven to block air infiltration at **25 and 50 mph wind speeds**, keeping your home clean, quiet, and energy efficient. (TAS 202 / ASTM E283) **PASS**

6 Extreme Pressure Resistance

Withstands up to **100% of design air pressure (55 PSF)** without bending, cracking, or failure. **PASS**

7 Storm-Grade Durability

Tested to endure over **4,500 pressure cycles** simulating real storm conditions — ensuring long-term strength and safety. (TAS 203-94) **PASS**

©2025 TEMO INC 0611

TEM[®] IMPACT GLASS SUNROOMS are the perfect combination
of beauty, performance, and protection.

When the weather turns fierce, trust TEM[®] to stand strong.



IMPACT GLASS SUNROOM DOOR & WINDOW WALL SYSTEM

EXCLUSIVE FEATURES

- ◆ Engineered to Meet the Strictest **Florida Building Code Standards**, Ensuring Performance in the Face of Extreme Weather
- ◆ Fully Tested for Forced Entry, Water & Air Infiltration (Safety & Comfort)
- ◆ Safety Glazing Certification Council (SGCC) & ICC
- ◆ Recognized & Certified for Building Codes and Insurance Companies
- ◆ 3 $\frac{5}{8}$ " Wall System with Heavy Gauge Aluminum Extrusion Coated with **DURACRON Liquid Acrylic by PPG**
- ◆ Cardinal 8.6 Annealed PVB 0.37 E340-S2 (Turtle Glass) 39% Visible Light Transmission with only 0.28 Solar Heat Gain Coefficient. U-Factor 0.26
- ◆ Reduces Ambient Sound for a Quieter, more Peaceful Environment
- ◆ Double Neat S-1 (Naturally Cleaner Glass)
- ◆ **"It's All About the View"** – Featuring Sliding Invisible Screens, which also makes Cleaning the Windows a Breeze
- ◆ Four Tandem Stainless Steel Ball Bearing Rollers (Gentle Slider)
- ◆ Adjustable Sashes (Easy Installation)
- ◆ Internal Weep System (No Water Staining)
- ◆ Top & Bottom Track Vinyl Bulb Seal (Air Tight)
- ◆ Manufactured in a Controlled Environment with Precision Tools to Customer Specifications

LIMITED LIFETIME WARRANTY

20400 HALL ROAD, CLINTON TOWNSHIP, MI 48038 | 866-337-6890 | www.TemoInc.com

IMPACT GLASS SUNROOM – UPPER DECK

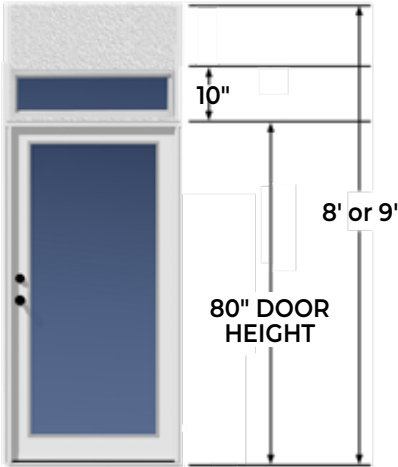
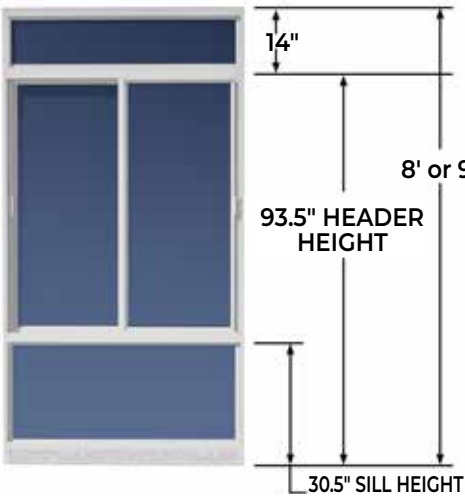
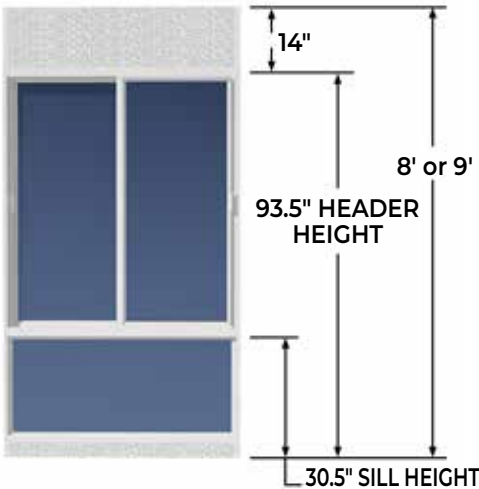


PHOTO & INSTALLATION BY LIFESTYLE REMODELING, FL

With Lower Glass

With Upper Transoms

DOOR



IMPACT GLASS SUNROOM – UPPER DECK

**IMPACT GLASS SUNROOM
UPPER DECK – Studio – White**



**IMPACT GLASS SUNROOM
UPPER DECK – Studio – White**



**IMPACT GLASS SUNROOM UPPER DECK
Studio – White**



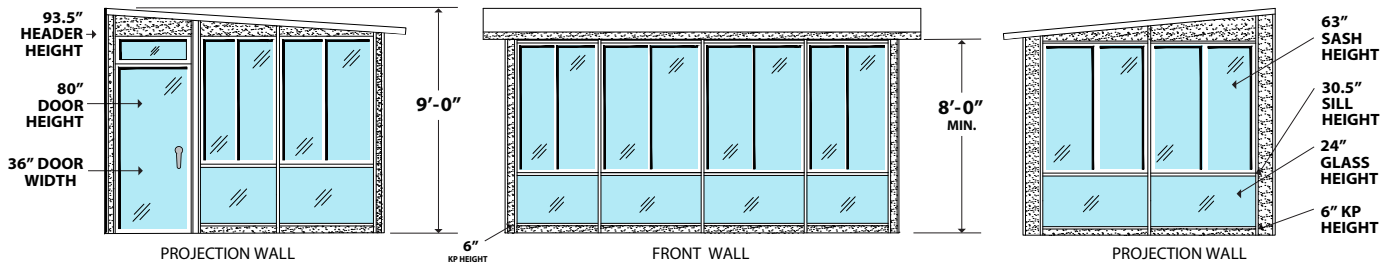
IMPACT GLASS SUNROOM – UPPER DECK

IMPORTANT PRODUCT DESCRIPTION

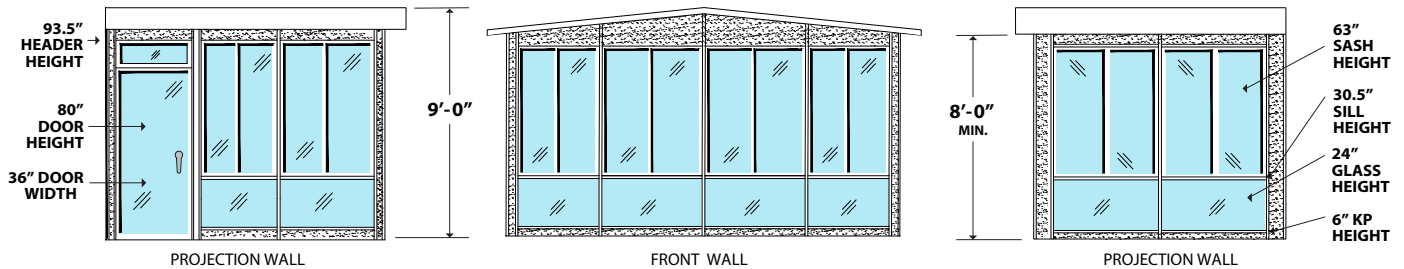
- **COLORS:** White or Bronze
- 9' to 8' Wall Height
- 30.5" Chair Rail Height
- 3 $\frac{5}{8}$ " Wall System
- 12" Top Transom or Fill Panel
- 63" Sash Height
- Standard Sash Width: 43" | 55" | 19.625" (*not recommended*)
- All Swing Doors on Upper Deck Have a 10" Top Transom

THE IMPACT WINDOWS ARE NOT THERMALLY BROKEN. THE FOLLOWING LINEALS ARE: CORNERS, 4X1 CONNECTORS, AND BASE/CAP EXPANDERS

STUDIO



LOW CATHEDRAL

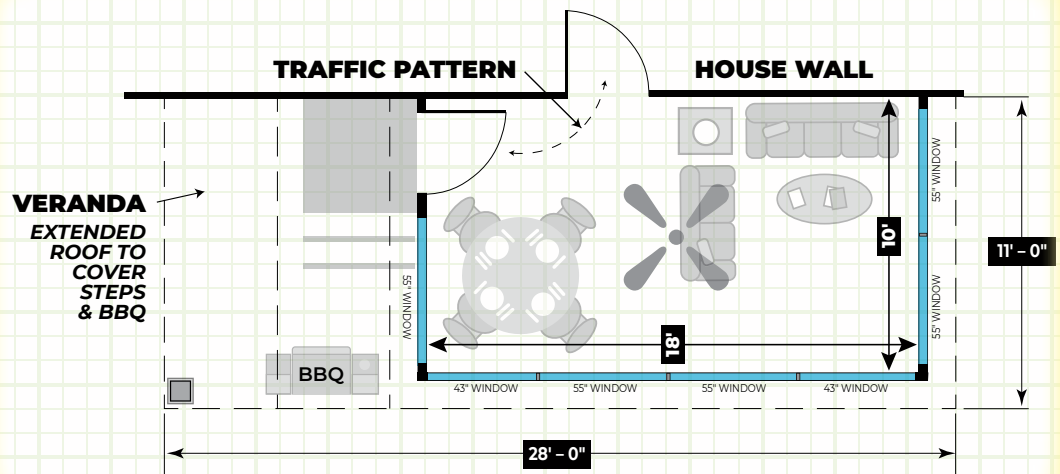


These rooms are configured with top and bottom Fill Panel, (1) prime entry door, standard roof, gutter, architectural roof cleats, hardware, and extruded aluminum electrical – both horizontal & vertical raceway (electrical ready). Electrical wire and plugs are not included.

IMPORTANT NOTE:

For the most efficient layout, the door should be located against the wall of the house. Please note that if you would like to add an additional door for full room in lieu of a window section, the cost to cover the swap is roughly **\$1495**. Adding a door or changing the door location will impact the room's design layout.

SHOWN WITH OPTIONAL VERANDA



ROOF PANELS WITH FAN BEAM(S), ADD \$12.00 RETAIL PER LINEAR FOOT - PER ROOF PANEL

All applicable taxes and freight from our plant are extra. Prices are subject to change without notice.

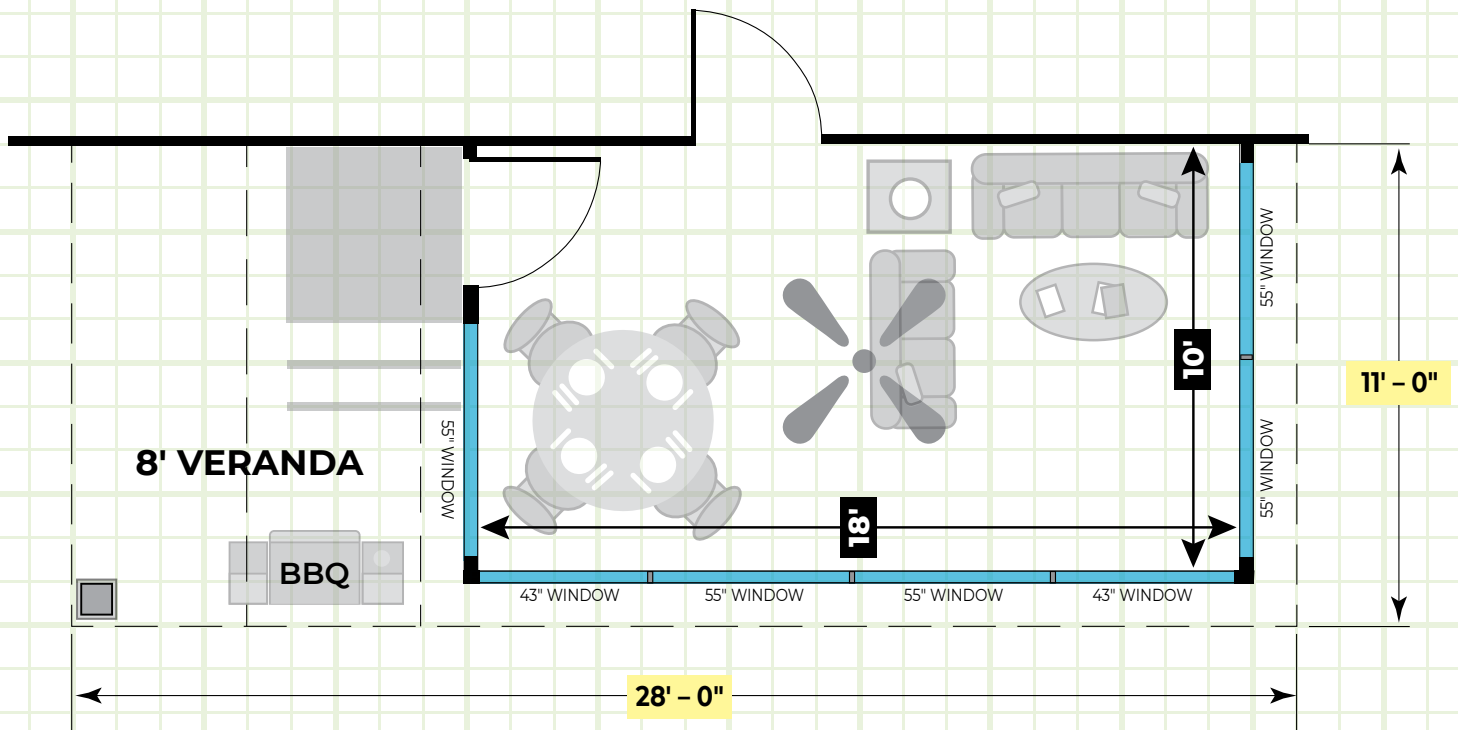


**IMPACT GLASS
SUNROOM**

**UPPER DECK
VISTA VIEW**

TEMO 

RECOMMENDED SUNROOM LAYOUT WITH VERANDA



IMPACT GLASS SUNROOM – UPPER DECK

IMPORTANT PRODUCT DESCRIPTION

- **COLORS:** White or Bronze
- **ROOF STYLES:** Studio or Low Cathedral
- TEMO 4¼" Roof with 1' Overhang
- 9' to 8' Wall Height
- 30.5" Chair Rail Height
- 3½" Wall System
- 12" Top Transom or Fill Panel
- 63" Sash Height
- Standard Sash Width 43" & 55"
- Upper Deck is Configured with 24" Bottom Transom or Fill Panel
- One Swing Door
- All Swing Doors on Upper Deck Have a 10" Top Transom

THE IMPACT WINDOWS ARE NOT THERMALLY BROKEN. THE FOLLOWING LINEALS ARE: CORNERS, 4X1 CONNECTORS, AND BASE/CAP EXPANDERS

OPTIONAL VERANDA INCLUDES: (2) Roof Panels, Extra Gutter, Extra Hanging Rail, Florentine Column Kit, Two Corbels, Pergola Beam, Gutter Splice, and Appropriate Hardware

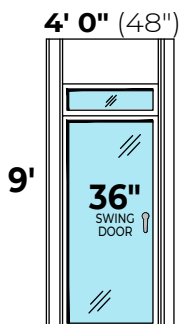
| | | | WIDTH – GREEN WIDTH IS THE MOST COST EFFECTIVE | | | | | | | | | OPTIONAL |
|------------|----------------|------|--|--------|--------|--------|--------|--------|--------|--------|--------|----------------|
| PROJECTION | WALLS/ ROOM | ROOF | IMPACT GLASS | 10' | 12' | 14' | 16' | 18' | 20' | 22' | 24' | +8' Veranda |
| | 8' | 9' | No Transom 24" Fill Panel | 33,395 | 37,495 | 39,095 | 42,795 | 44,195 | 47,095 | 49,795 | 55,795 | + 4,395 |
| | | | Bottom 24" Transom | 37,295 | 42,195 | 44,195 | 48,295 | 49,995 | 53,295 | 56,395 | 60,895 | + 4,395 |
| | 10' | 11' | No Transom 24" Fill Panel | 38,295 | 43,095 | 44,695 | 48,495 | 49,895 | 52,995 | 56,095 | 59,795 | + 4,695 |
| | | | Bottom 24" Transom | 43,195 | 48,695 | 50,695 | 54,995 | 56,695 | 60,195 | 63,695 | 67,895 | + 4,695 |
| | 12' | 13' | No Transom 24" Fill Panel | 44,395 | 49,395 | 51,095 | 55,295 | 56,895 | 60,295 | 63,095 | 67,195 | + 5,295 |
| | | | Bottom 24" Transom | 49,995 | 55,795 | 57,895 | 62,495 | 64,395 | 68,195 | 71,495 | 75,995 | + 5,295 |
| | 14' | 15' | No Transom 24" Fill Panel | 51,095 | 57,395 | 58,995 | 64,195 | 65,595 | 69,995 | 72,695 | 77,995 | + 7,395 |
| | | | Bottom 24" Transom | 57,395 | 64,495 | 66,395 | 72,095 | 73,795 | 78,595 | 81,695 | 87,395 | + 7,395 |
| | 16' | 17' | No Transom 24" Fill Panel | 58,195 | 64,395 | 65,895 | 71,395 | 72,695 | 77,495 | 80,595 | 86,095 | + 7,995 |
| | | | Bottom 24" Transom | 65,395 | 72,395 | 74,195 | 80,195 | 81,895 | 86,895 | 90,495 | 96,495 | + 7,995 |

All applicable taxes and freight from our plant are extra. Prices are subject to change without notice.

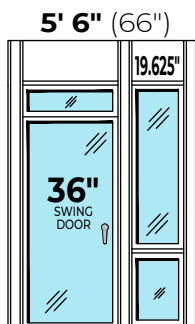
IMPACT GLASS SUNROOM – UPPER DECK

WALLS UNDER WITH SWING DOOR / LANAI PORCH MAKEOVER

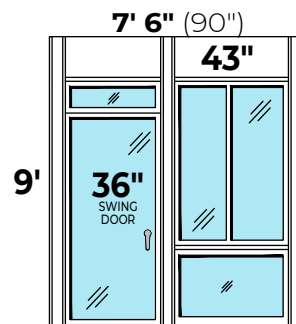
- **COLORS:** White or Bronze
- 9' Wall Height
- 30.5" Chair Rail Height
- 3½" Wall System
- 12" Top Transom or Fill Panel
- 63" Sash Height
- Upper Deck is Configured with 24" Bottom Transom or Fill Panel
- All Swing Doors on Upper Deck Have a 10" Top Transom
- Add or Subtract Projection (NEXT SIZE UP IF NOT LISTED)



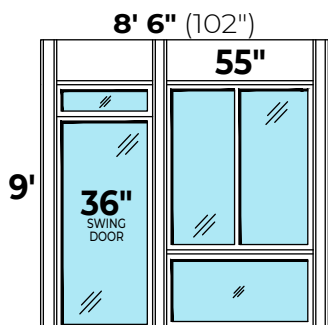
| Swing Door (SD) Only | IMPACT |
|----------------------|--------|
| No Transom | 6,795 |
| 10" Top Transom | 7,395 |



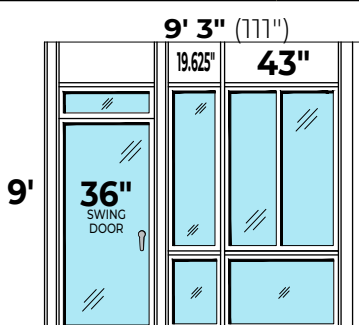
| SD 19.625" FL | IMPACT |
|----------------------|--------|
| No Transom | 8,495 |
| 12" Top Transom | 8,995 |
| 24" Bottom Transom | 9,195 |
| 12" Top & 24" Bottom | 9,495 |



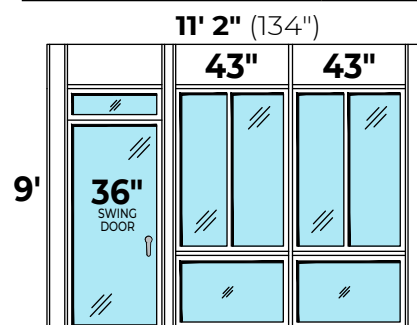
| SD 43" | IMPACT |
|----------------------|--------|
| No Transom | 10,695 |
| 12" Top Transom | 11,295 |
| 24" Bottom Transom | 11,495 |
| 12" Top & 24" Bottom | 12,095 |



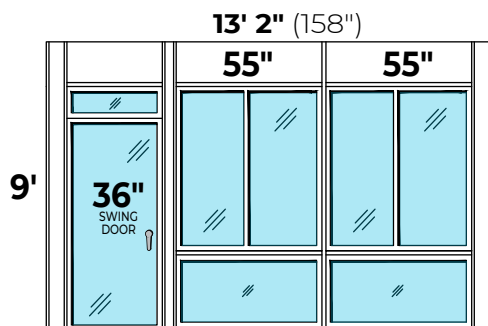
| SD 55" | IMPACT |
|----------------------|--------|
| No Transom | 11,395 |
| 12" Top Transom | 12,195 |
| 24" Bottom Transom | 12,395 |
| 12" Top & 24" Bottom | 13,195 |



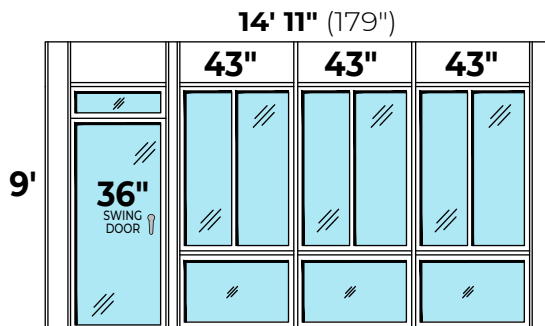
| SD 19.625" 43" | IMPACT |
|----------------------|--------|
| No Transom | 13,395 |
| 12" Top Transom | 14,695 |
| 24" Bottom Transom | 14,895 |
| 12" Top & 24" Bottom | 16,195 |



| SD 43" 43" | IMPACT |
|----------------------|--------|
| No Transom | 14,795 |
| 12" Top Transom | 16,195 |
| 24" Bottom Transom | 16,395 |
| 12" Top & 24" Bottom | 17,795 |



| SD 55" 55" | IMPACT |
|----------------------|--------|
| No Transom | 16,395 |
| 12" Top Transom | 18,095 |
| 24" Bottom Transom | 18,395 |
| 12" Top & 24" Bottom | 19,995 |



| SD 43" 43" 43" | IMPACT |
|----------------------|--------|
| No Transom | 19,295 |
| 12" Top Transom | 21,295 |
| 24" Bottom Transom | 21,695 |
| 12" Top & 24" Bottom | 23,695 |

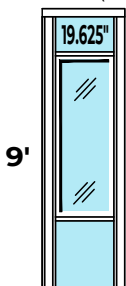
All applicable taxes and freight from our plant are extra. Prices are subject to change without notice.

IMPACT GLASS SUNROOM – UPPER DECK

WALLS UNDER ONLY / LANAI PORCH MAKEOVER

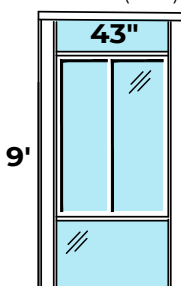
- **COLORS:** White or Bronze
- 9' Wall Height
- 30.5" Chair Rail Height
- 3⅝" Wall System
- 12" Top Transom or Fill Panel
- 63" Sash Height
- Upper Deck is Configured with 24" Bottom Transom or Fill Panel
- All Swing Doors on Upper Deck Have a 10" Top Transom
- Add or Subtract Projection (NEXT SIZE UP IF NOT LISTED)

2' 7" (31")



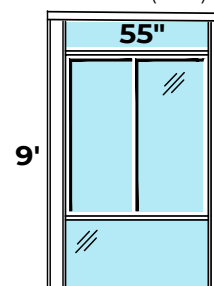
| 19.625" FL | IMPACT |
|----------------------|--------|
| No Transom | 3,695 |
| 12" Top Transom | 4,195 |
| 24" Bottom Transom | 4,295 |
| 12" Top & 24" Bottom | 4,695 |

4' 4" (52")



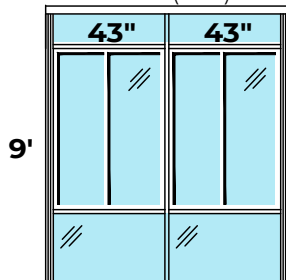
| 43" | IMPACT |
|----------------------|--------|
| No Transom | 5,895 |
| 12" Top Transom | 6,495 |
| 24" Bottom Transom | 6,695 |
| 12" Top & 24" Bottom | 7,295 |

6' 0" (72")



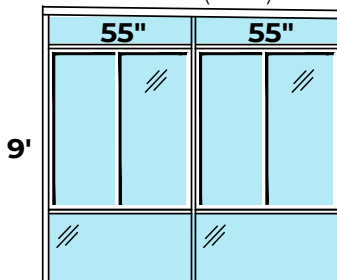
| 55" | IMPACT |
|----------------------|--------|
| No Transom | 6,595 |
| 12" Top Transom | 7,395 |
| 24" Bottom Transom | 7,595 |
| 12" Top & 24" Bottom | 8,395 |

8' 1" (97")



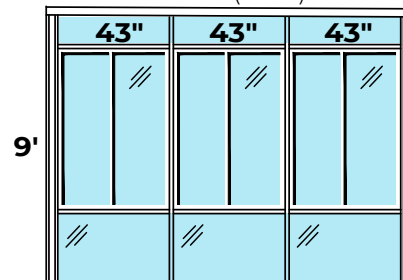
| 43" 43" | IMPACT |
|----------------------|--------|
| No Transom | 10,095 |
| 12" Top Transom | 11,395 |
| 24" Bottom Transom | 11,695 |
| 12" Top & 24" Bottom | 12,995 |

10' 0" (120")



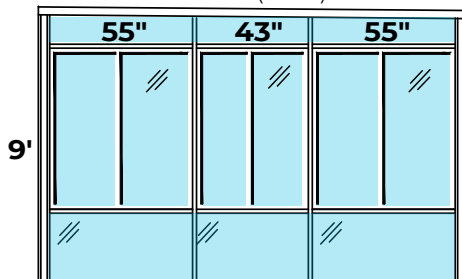
| 55" 55" | IMPACT |
|----------------------|--------|
| No Transom | 11,495 |
| 12" Top Transom | 13,195 |
| 24" Bottom Transom | 13,395 |
| 12" Top & 24" Bottom | 15,095 |

12' 0" (144")



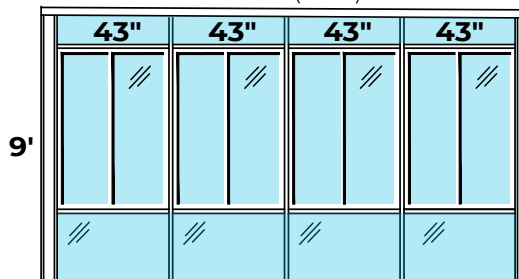
| 43" 43" 43" | IMPACT |
|----------------------|--------|
| No Transom | 14,195 |
| 12" Top Transom | 16,195 |
| 24" Bottom Transom | 16,595 |
| 12" Top & 24" Bottom | 18,595 |

14' 0" (168")



| 55" 43" 55" | IMPACT |
|----------------------|--------|
| No Transom | 15,795 |
| 12" Top Transom | 18,095 |
| 24" Bottom Transom | 18,595 |
| 12" Top & 24" Bottom | 20,895 |

16' 0" (192")



| 43" 43" 43" 43" | IMPACT |
|-----------------------|--------|
| No Transom | 18,595 |
| 12" Top Transom | 21,195 |
| 24" Bottom Transom | 21,795 |
| 12" Top & 24" Bottom | 24,395 |

All applicable taxes and freight from our plant are extra. Prices are subject to change without notice.

[illegible]

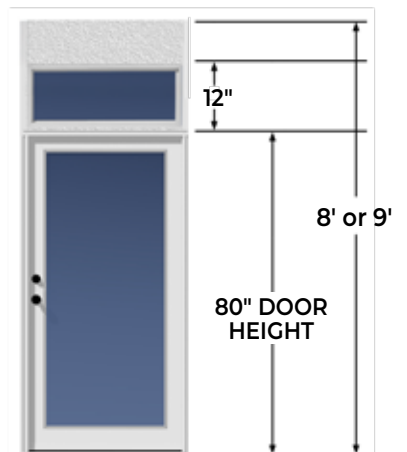
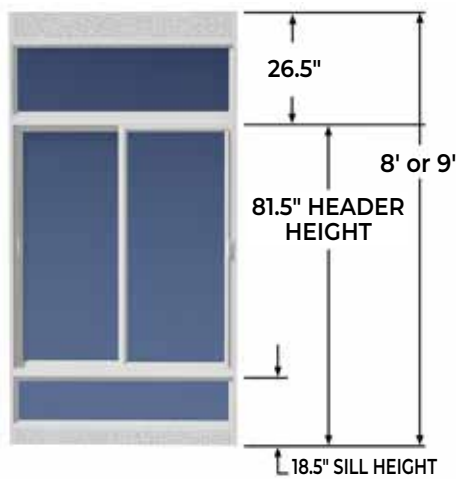
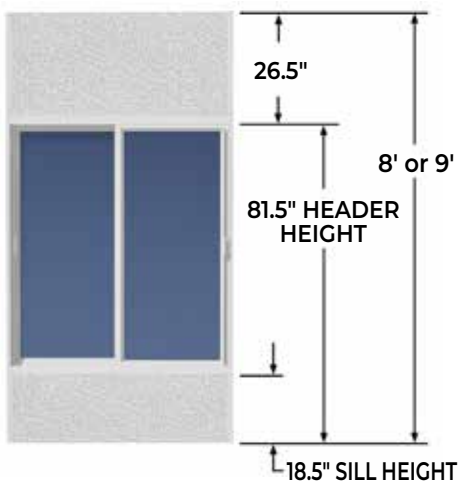
IMPACT GLASS SUNROOM – VISTA VIEW



With Fill Panel

With Two Transoms

DOOR



IMPACT GLASS SUNROOM – VISTA VIEW

IMPACT GLASS SUNROOM VISTA VIEW
Studio – White



IMPACT GLASS SUNROOM VISTA VIEW
Studio – White



IMPACT GLASS SUNROOM VISTA VIEW
Lanai Porch Makeover – Bronze



IMPACT GLASS SUNROOM VISTA VIEW
Cathedral – White with Bronze Trim



IMPACT GLASS SUNROOM VISTA VIEW
Lanai Porch Makeover – Bronze



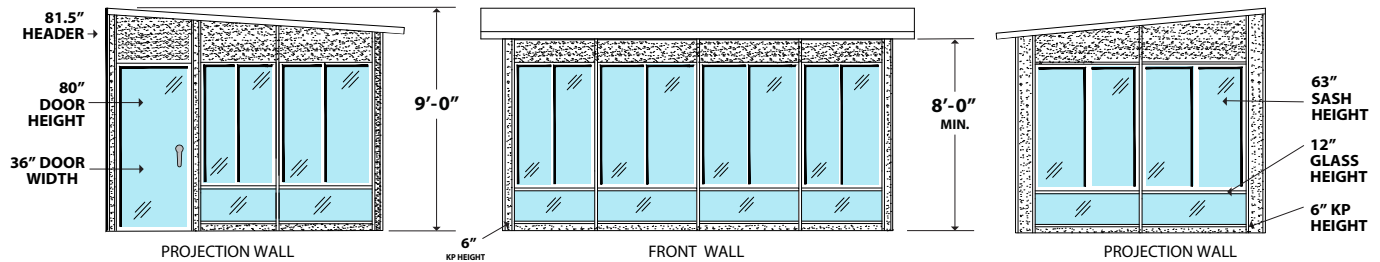
IMPACT GLASS SUNROOM – VISTA VIEW

IMPORTANT PRODUCT DESCRIPTION

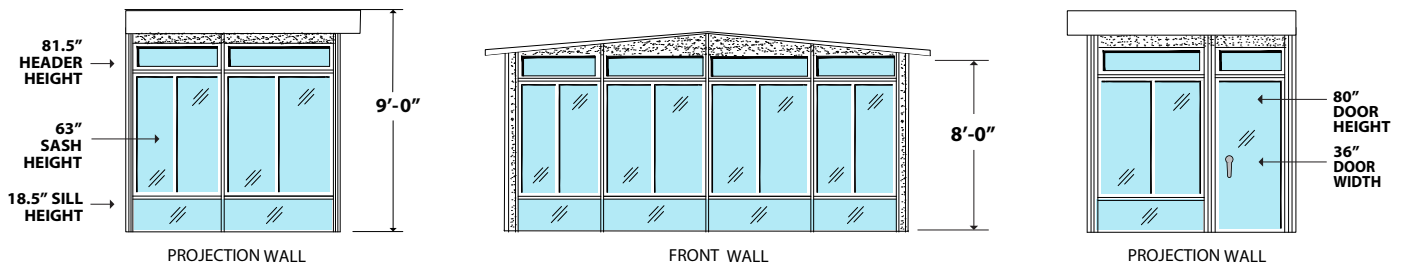
- **COLORS:** White or Bronze
- 9' to 8' Wall Height
- 18.5" Sill Height
- 3½" Wall System
- 12" Top Transom or Fill Panel
- 63" Sash Height
- Standard Sash Width: 43" | 55" | 19.625" (*not recommended*)

THE IMPACT WINDOWS ARE NOT THERMALLY BROKEN. THE FOLLOWING LINEALS ARE: CORNERS, 4X1 CONNECTORS, AND BASE/CAP EXPANDERS

STUDIO



LOW CATHEDRAL

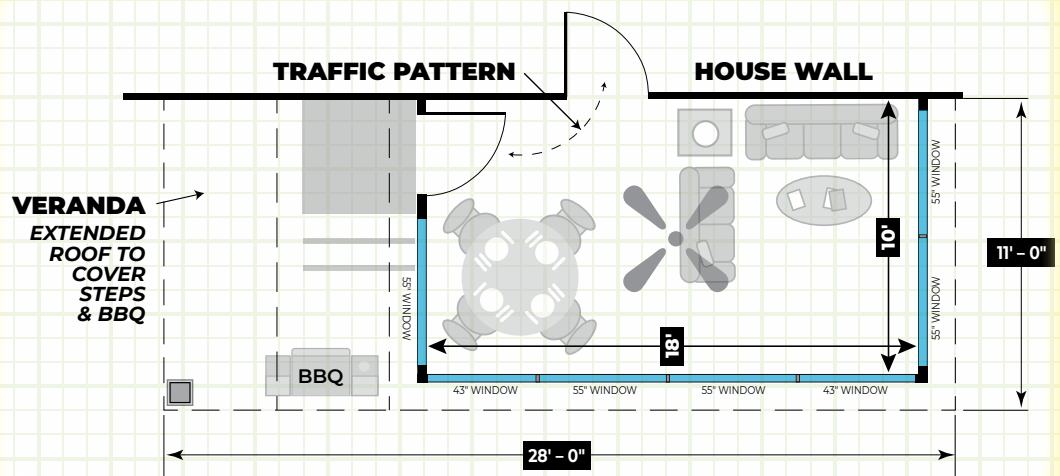


These rooms are configured with top and bottom Fill Panel, (1) prime entry door, standard roof, gutter, architectural roof cleats, hardware, and extruded aluminum electrical – both horizontal & vertical raceway (electrical ready). Electrical wire and plugs are not included.

IMPORTANT NOTE:

For the most efficient layout, the door should be located against the wall of the house. Please note that if you would like to add an additional door for full room in lieu of a window section, the cost to cover the swap is roughly **\$1495**. Adding a door or changing the door location will impact the room's design layout.

SHOWN WITH OPTIONAL VERANDA



ROOF PANELS WITH FAN BEAM(S), ADD \$12.00 RETAIL PER LINEAR FOOT - PER ROOF PANEL

All applicable taxes and freight from our plant are extra. Prices are subject to change without notice.

[illegible]

All applicable taxes and freight from our plant are extra. Prices are subject to change without notice.

IMPACT GLASS SUNROOM – VISTA VIEW

IMPORTANT PRODUCT DESCRIPTION

- COLORS:** White or Bronze
- ROOF STYLES:** Studio or Low Cathedral
- TEMO 4¼" Roof with 1' Overhang
- 9' to 8' Wall Height
- 18.5" Sill Height
- 3⅝" Wall System
- 12" Top Transom or Fill Panel
- 63" Sash Height
- Standard Sash Width 43" & 55"
- One Swing Door
- Header Height 81.5"

THE IMPACT WINDOWS ARE NOT THERMALLY BROKEN. THE FOLLOWING LINEALS ARE: CORNERS, 4X1 CONNECTORS, AND BASE/CAP EXPANDERS

OPTIONAL VERANDA INCLUDES: (2) Roof Panels, Extra Gutter, Extra Hanging Rail, Florentine Column Kit, Two Corbels, Pergola Beam, Gutter Splice, and Appropriate Hardware

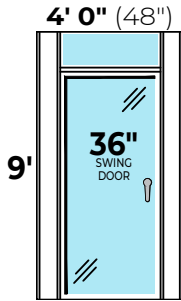
| | | | WIDTH – GREEN WIDTH IS THE MOST COST EFFECTIVE | | | | | | | | | OPTIONAL |
|------------|----------------|------|--|--------|--------|--------|--------|--------|--------|--------|---------|----------------|
| PROJECTION | WALLS/ ROOM | ROOF | IMPACT GLASS | 10' | 12' | 14' | 16' | 18' | 20' | 22' | 24' | +8' Veranda |
| | 8' | 9' | NO TRANSOM | 32,495 | 36,595 | 38,295 | 41,895 | 43,295 | 46,195 | 48,895 | 52,895 | + 4,395 |
| | | | TOP TRANSOM | 36,395 | 41,195 | 43,195 | 47,195 | 48,895 | 52,095 | 55,095 | 59,595 | + 4,395 |
| | | | TOP & BOTTOM TRANSOMS | 39,795 | 45,295 | 47,595 | 51,895 | 53,895 | 57,495 | 60,895 | 65,695 | + 4,395 |
| | 10' | 11' | NO TRANSOM | 37,395 | 42,195 | 43,795 | 47,695 | 48,995 | 52,095 | 55,195 | 58,995 | + 4,695 |
| | | | TOP TRANSOM | 42,195 | 47,595 | 49,595 | 53,795 | 55,495 | 58,895 | 62,295 | 66,395 | + 4,695 |
| | | | TOP & BOTTOM TRANSOMS | 46,395 | 52,495 | 54,795 | 59,395 | 61,395 | 65,095 | 68,895 | 73,395 | + 4,695 |
| | 12' | 13' | NO TRANSOM | 43,795 | 48,895 | 50,595 | 54,695 | 56,295 | 59,795 | 62,595 | 66,695 | + 5,295 |
| | | | TOP TRANSOM | 49,095 | 54,795 | 56,795 | 61,295 | 63,295 | 66,995 | 70,195 | 74,595 | + 5,295 |
| | | | TOP & BOTTOM TRANSOMS | 53,895 | 60,295 | 62,595 | 67,495 | 69,695 | 73,895 | 77,295 | 82,095 | + 5,295 |
| | 14' | 15' | NO TRANSOM | 50,495 | 56,795 | 58,395 | 63,695 | 64,995 | 69,395 | 72,095 | 77,395 | + 7,395 |
| | | | TOP TRANSOM | 56,395 | 63,395 | 65,295 | 70,895 | 72,595 | 77,395 | 80,395 | 85,995 | + 7,395 |
| | | | TOP & BOTTOM TRANSOMS | 61,895 | 69,595 | 71,795 | 77,695 | 79,795 | 84,795 | 88,195 | 94,195 | + 7,395 |
| | 16' | 17' | NO TRANSOM | 57,595 | 63,795 | 65,295 | 70,795 | 72,195 | 76,895 | 79,995 | 85,595 | + 7,995 |
| | | | TOP TRANSOM | 64,295 | 71,095 | 72,895 | 78,795 | 80,495 | 85,495 | 88,995 | 94,895 | + 7,995 |
| | | | TOP & BOTTOM TRANSOMS | 70,395 | 77,895 | 80,095 | 86,295 | 88,295 | 93,695 | 97,495 | 103,895 | + 7,995 |

All applicable taxes and freight from our plant are extra. Prices are subject to change without notice.

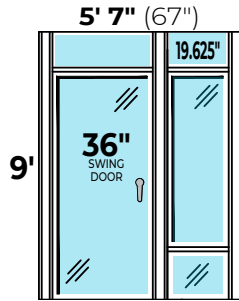
IMPACT GLASS SUNROOM – VISTA VIEW

WALLS UNDER WITH SWING DOOR / LANAI PORCH MAKEOVER

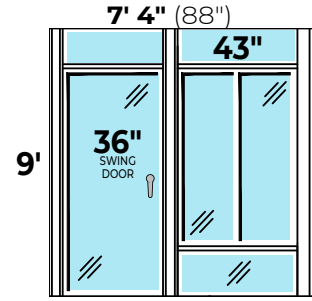
- **COLORS:** White or Bronze
- 63" Sash Height
- Add or Subtract Projection (NEXT SIZE UP IF NOT LISTED)
- 9' to 8' Wall Height
- 12" Top or 12" Bottom Transom or Fill Panel
- One Swing Door
- 35/8" Wall System



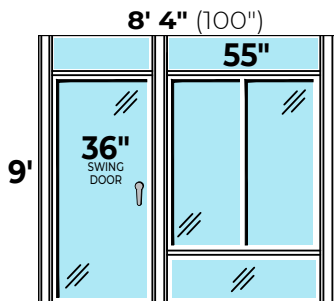
| Swing Door (SD) Only | IMPACT GLASS |
|----------------------|--------------|
| NO TRANSOM | 5,895 |
| 12" Top Transom | 6,495 |



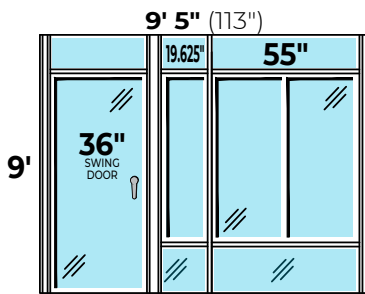
| SD 19.625" FL | IMPACT GLASS |
|--------------------------------|--------------|
| NO TRANSOM | 7,895 |
| 12" Top or 12" Bottom Transoms | 8,995 |
| 12" Top & 12" Bottom Transoms | 9,495 |



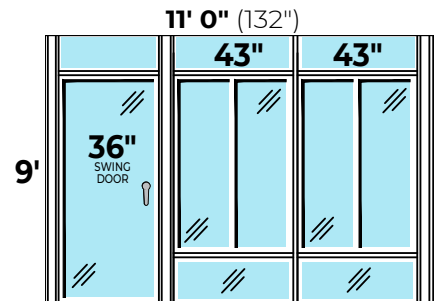
| SD 43" | IMPACT GLASS |
|--------------------------------|--------------|
| NO TRANSOM | 10,095 |
| 12" Top or 12" Bottom Transoms | 11,295 |
| 12" Top & 12" Bottom Transoms | 11,995 |



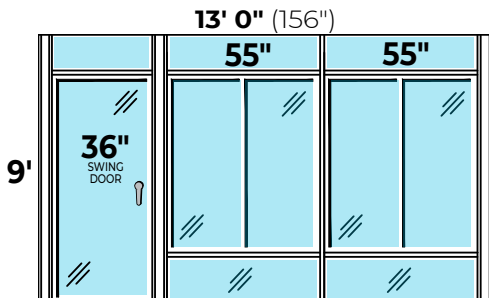
| SD 55" | IMPACT GLASS |
|--------------------------------|--------------|
| NO TRANSOM | 10,795 |
| 12" Top or 12" Bottom Transoms | 12,195 |
| 12" Top & 12" Bottom Transoms | 13,095 |



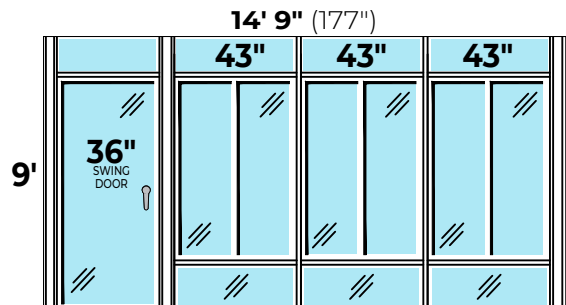
| SD 19.625" 55" | IMPACT GLASS |
|--------------------------------|--------------|
| NO TRANSOM | 12,795 |
| 12" Top or 12" Bottom Transoms | 14,695 |
| 12" Top & 12" Bottom Transoms | 16,095 |



| SD 43" 43" | IMPACT GLASS |
|--------------------------------|--------------|
| NO TRANSOM | 14,295 |
| 12" Top or 12" Bottom Transoms | 16,195 |
| 12" Top & 12" Bottom Transoms | 17,595 |



| SD 55" 55" | IMPACT GLASS |
|--------------------------------|--------------|
| NO TRANSOM | 15,795 |
| 12" Top or 12" Bottom Transoms | 18,095 |
| 12" Top & 12" Bottom Transoms | 19,795 |



| SD 43" 43" 43" | IMPACT GLASS |
|--------------------------------|--------------|
| NO TRANSOM | 18,695 |
| 12" Top or 12" Bottom Transoms | 21,295 |
| 12" Top & 12" Bottom Transoms | 23,195 |

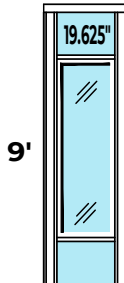
All applicable taxes and freight from our plant are extra. Prices are subject to change without notice.

IMPACT GLASS SUNROOM – VISTA VIEW

WALLS UNDER ONLY / LANAI PORCH MAKEOVER

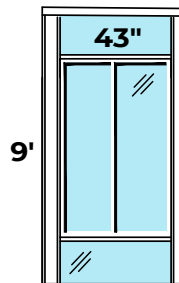
- **COLORS:** White or Bronze
- 9' to 8' Wall Height
- 35/8" Wall System
- 63" Sash Height
- 12" Top or 12" Bottom Transom or Fill Panel
- Add or Subtract Projection (NEXT SIZE UP IF NOT LISTED)

2' 7" (31")



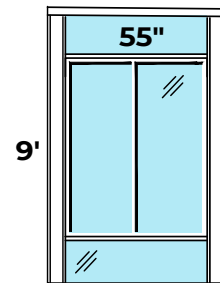
| 19.625" FL | IMPACT GLASS |
|--------------------------------|--------------|
| NO TRANSOM | 3,695 |
| 12" Top or 12" Bottom Transoms | 4,195 |
| 12" Top & 12" Bottom Transoms | 4,695 |

4' 4" (52")



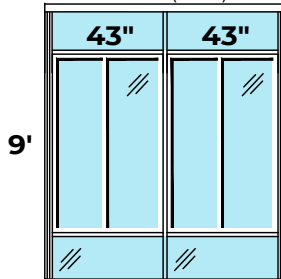
| 43" | IMPACT GLASS |
|--------------------------------|--------------|
| NO TRANSOM | 5,895 |
| 12" Top or 12" Bottom Transoms | 6,495 |
| 12" Top & 12" Bottom Transoms | 7,195 |

6' 0" (72")



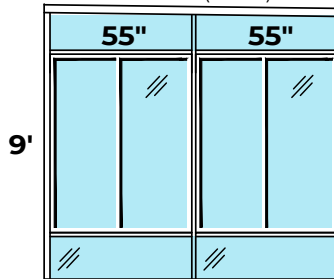
| 55" | IMPACT GLASS |
|--------------------------------|--------------|
| NO TRANSOM | 6,595 |
| 12" Top or 12" Bottom Transoms | 7,395 |
| 12" Top & 12" Bottom Transoms | 8,295 |

8' 1" (97")



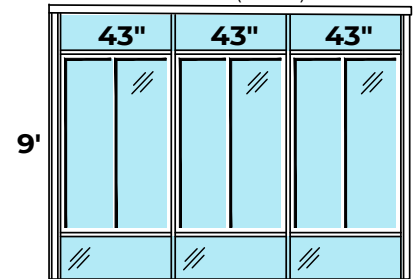
| 43" 43" | IMPACT GLASS |
|--------------------------------|--------------|
| NO TRANSOM | 10,095 |
| 12" Top or 12" Bottom Transoms | 11,395 |
| 12" Top & 12" Bottom Transoms | 12,795 |

10' 0" (120")



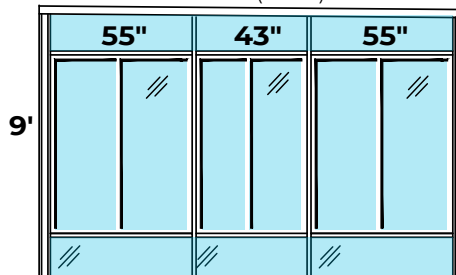
| 55" 55" | IMPACT GLASS |
|--------------------------------|--------------|
| NO TRANSOM | 11,495 |
| 12" Top or 12" Bottom Transoms | 13,195 |
| 12" Top & 12" Bottom Transoms | 14,895 |

12' 0" (144")



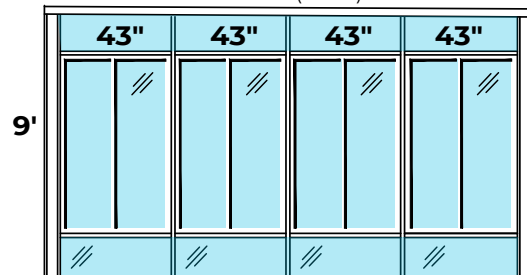
| 43" 43" 43" | IMPACT GLASS |
|--------------------------------|--------------|
| NO TRANSOM | 14,195 |
| 12" Top or 12" Bottom Transoms | 16,195 |
| 12" Top & 12" Bottom Transoms | 18,295 |

14' 0" (168")



| 55" 43" 55" | IMPACT GLASS |
|--------------------------------|--------------|
| NO TRANSOM | 15,795 |
| 12" Top or 12" Bottom Transoms | 18,095 |
| 12" Top & 12" Bottom Transoms | 20,495 |

16' 0" (192")



| 43" 43" 43" 43" | IMPACT GLASS |
|--------------------------------|--------------|
| NO TRANSOM | 18,595 |
| 12" Top or 12" Bottom Transoms | 21,195 |
| 12" Top & 12" Bottom Transoms | 23,995 |

All applicable taxes and freight from our plant are extra. Prices are subject to change without notice.



IMPACT GLASS SUNROOMS

Roof Load 30lb

Effective June 1, 2025

**ANY QUESTIONS CONTACT YOUR
REGIONAL REPRESENTATIVE
800-344-8366
20400 Hall Road, Clinton Twp., MI 48038
www.TemoInc.com**

**Shipping@TemoInc.com
AR@TemoInc.com
CustomerService@TemoInc.com**

©2025 TEMO Inc.

All rights reserved. No part of this publication may be reproduced, distributed, or transmitted in any form or by any means, including photocopying, or other electronic or mechanical methods, without the prior written permission of TEMO Inc.

DISCLAIMER OF RESPONSIBILITY

Please review all retail prices in this booklet and associated digital assets prior to use in the field. TEMO is not liable for any errors, omissions, or typographical mistakes that may result in a loss of revenue or business. The product photos in this booklet are for illustration purposes only and may not feature impact glass; the only visual difference is that impact glass may appear slightly darker and more reflective.

FOR MOST UPDATED ONLINE VERSION

